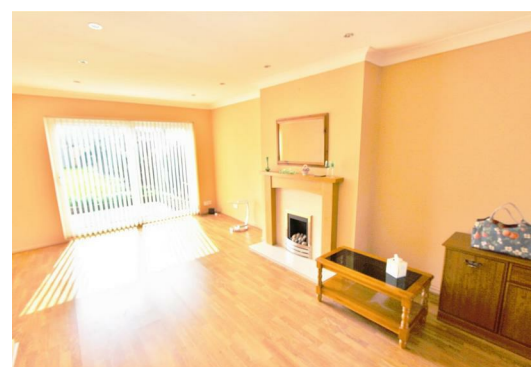
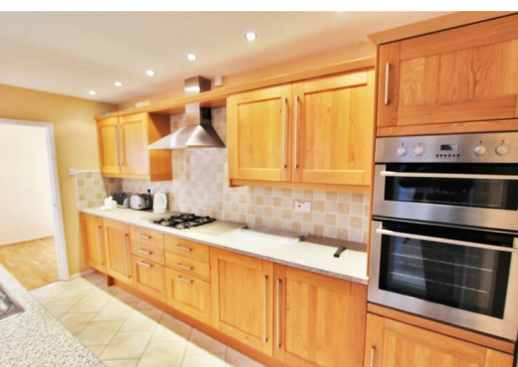




Downing Drive,
Leicester, Leicestershire, LE5 6LR
£825 PCM



Newton Fallowell presents a three bedroom semi-detached property located in Evington.

Benefiting from gas central heating, double glazing, garage, spacious rear garden, driveway to fit 2 vehicles, outside storage and shed.

Offered on an unfurnished basis but to include integrated hob and double oven/grill, integrated fridge, integrated dishwasher.

Available 19th January 2022.

Accommodation

entrance hallway

downstairs wc

reception room

kitchen

stairs and landing

bedroom 1

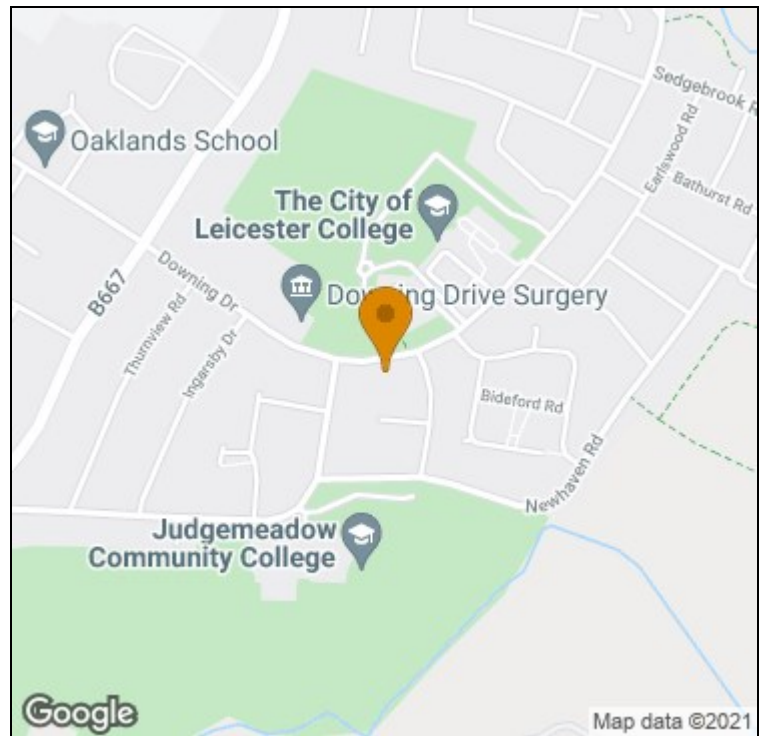
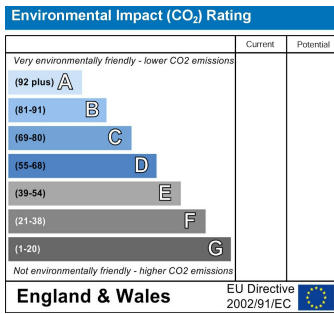
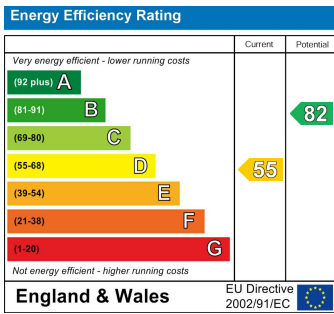
bedroom 2

bathroom

bedroom 3

rear garden

garage



t: 01163660990 e: oadby@newtonfallowell.co.uk

www.newtonfallowell.co.uk